

### Key Investor Information

This document provides you with key investor information about this Fund. It is not marketing material. The information is required by law to help you understand the nature and the risks of investing in this Fund.

You are advised to read it so you can make an informed decision about whether to invest.

# Interfund Bond Global Emerging Markets

Sub-Fund of Interfund Sicav (ISIN LU0109669498)

Management Company: Fideuram Asset Management (Ireland) dac, Intesa Sanpaolo banking group

## OBJECTIVES AND INVESTMENT POLICY

The Sub-Fund, expressed in Euro, aims to obtain a positive return by investing essentially in bonds denominated in US dollars of governmental issuers in Emerging Countries.

The investments will be carried out independently of the duration of the securities and will be essentially covered against the exchange rate risk.

The Sub-Fund may invest up to 10% of its net assets in debt securities issued by Mainland China issuers through Bond Connect program.

The Sub-Fund may use financial derivative instruments for the purpose of risk hedging and for investment purposes.

The benchmark of the Sub-Fund consists of the index "J.P. Morgan EMBI Global Diversified" Total Return hedged in EUR.

The Sub-fund is actively managed and the degree of freedom allowed within the management of the sub-fund is material. The relative risk and positioning to the benchmark is monitored. To provide a disciplined management approach, risk limits are set to contain investment risk. This may impact the extent to which the composition of the portfolio and its performance deviate from that of the benchmark.

This is a capitalization Sub-Fund.

You may redeem the shares held at any moment, by sending a request on any business day.

## RISK AND REWARD PROFILE

Lower risk  
Potential lower  
reward

Higher risk  
Potential higher  
reward



- This Sub-Fund is classified in the risk and reward category 4 because the investments' value shows low fluctuations, both positive and negative.
- The historical data such as is used to calculate the synthetic risk and reward indicator may not be a reliable indication for the future risk profile of the Sub-Fund.
- The risk and reward category shown is not guaranteed to remain unchanged and the categorization of the Sub-Fund may shift over time.
- Even the lowest risk category does not mean a risk-free investment.

### THE SYNTHETIC RISK AND REWARD INDICATOR DOES NOT ADEQUATELY CAPTURE THE FOLLOWING RISKS:

- **Credit risk:** The Sub-Fund invests in securities whose credit rating may get worse, increasing the risk that the issuer is unable to fulfil its commitments with a negative impact on the securities' price.
- **Developing market risk:** The Sub-Fund is exposed to securities highly sensitive to political and economic instability

of developing countries such as civil conflicts, changes in government policies and in taxation, currency fluctuations and other developments in the laws and regulations of countries in which investments may be made. Price changes may be higher than those in the markets of developed countries.

- Investing in the People's Republic of China (PRC) is subject to the risks of investing in emerging markets and additional risks, which are specific to the PRC market. In case of investment in China A shares and/or in debt securities issued by Mainland China issuers, where securities are held in custody on a cross-border basis, there are specific legal/beneficial ownership risks linked to compulsory requirements of the local central securities depositories.
- **Liquidity risk:** The Sub-Fund invests in markets that can be characterized by a reduced possibility to exchange securities without a negative impact on prices.

## CHARGES

These fees and charges are used to pay the costs of running the Sub-Fund, including the costs of marketing and selling. They reduce the potential growth of your investment.

One-off charges taken before or after the investment	
Entry fee	6.50 %
Exit fee	0.00 %

Maximum percentage that can be withdrawn from your capital before it will be invested or before the return is distributed.

Charges taken from the Sub-Fund over a year	
Ongoing charges	1.06 %

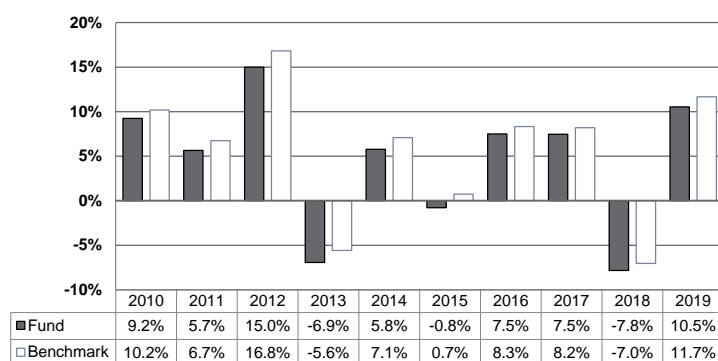
Charges taken from the Sub-Fund under certain specific conditions	
Performance fee	0.00 %

The **entry** and **exit fees** shown in the chart are maximum figures. In some cases you might pay less. You can find this out from your financial adviser or from the distributors. The **ongoing charges** figure is based on expenses for the year ending on **31/12/2019**. This figure may vary from year to year.

It excludes performance fees and portfolio transaction costs, except in the case of an entry/exit fee paid by the Sub-Fund when buying or selling shares in another fund.

**For more information about charges and fees, including the information of the calculation criteria of the performance fees, please see section "Charges" of the SICAV's Prospectus, available on the website [www.fideuramireland.ie](http://www.fideuramireland.ie).**

## PAST RESULTS



Past performance is not a reliable guide to future performance.

Date of setting up of the SICAV: August 28th, 1968.

Launch date of the Sub-Fund: October 1st, 2003.

The past performance of the Sub-Fund is calculated in Euro.

The past performance indicated herein takes into account all the costs and charges, with the exception of the entry, exit and switch charges.

## PRACTICAL INFORMATION

This document contains the Key Investor Information on Interfund Bond Global Emerging Markets.

Depository of the SICAV: FIDEURAM BANK(LUXEMBOURG) S.A..

Copies of the SICAV's Prospectus and of the latest annual and halfyearly reports may be obtained free of charge at any moment at the registered office of the SICAV, the Management Company as well as at the offices of FIDEURAM BANK (LUXEMBOURG) S.A. and Fideuram S.p.A. Details of the remuneration policy, including the persons in charge of determining the fixed and variable remunerations of the staff, a description of the key remuneration elements and an overview of how remuneration is determined, is available on the website

[http://www.fideuramireland.ie/upload/File/pdf/Policy\\_FAMI/FAMI\\_Remuneration\\_Policy.pdf](http://www.fideuramireland.ie/upload/File/pdf/Policy_FAMI/FAMI_Remuneration_Policy.pdf). A paper copy of the summarised remuneration policy is available free of charge upon request. The latest price of the shares is available every business day in Luxembourg at the office of the Depository and on the website

[www.fideuramireland.ie](http://www.fideuramireland.ie). FIDEURAM ASSET MANAGEMENT (IRELAND) dac may be held liable solely on the basis of any statement contained in this document that is misleading, in accurate or inconsistent with the relevant parts of the SICAV's Prospectus. The SICAV is subject to the Luxembourg tax legislation. Said legislation may have an impact on your personal tax position. This SICAV is divided into multiple sub-funds. The assets and liabilities of this Sub-Fund are separate from those of other subfunds. The financial rights of the investors in this Sub-Fund are totally distinct from those of the investors in other sub-funds. The shares may only be subscribed under "UNI" contract with unique payments. You may switch in any time the shares of the Sub-Fund with shares of other sub-funds. Information on the switching right procedures are set out in section "How to modify the composition of the investment: switches" of the SICAV's Prospectus. The Prospectus, the latest annual report and the half-yearly report are drawn up for the SICAV as a whole as indicated in the heading of the present document.

[www.fideuramireland.ie](http://www.fideuramireland.ie). FIDEURAM ASSET MANAGEMENT (IRELAND) dac may be held liable solely on the basis of any statement contained in this document that is misleading, in accurate or inconsistent with the relevant parts of the SICAV's Prospectus. The SICAV is subject to the Luxembourg tax legislation. Said legislation may have an impact on your personal tax position. This SICAV is divided into multiple sub-funds. The assets and liabilities of this Sub-Fund are separate from those of other subfunds. The financial rights of the investors in this Sub-Fund are totally distinct from those of the investors in other sub-funds. The shares may only be subscribed under "UNI" contract with unique payments. You may switch in any time the shares of the Sub-Fund with shares of other sub-funds. Information on the switching right procedures are set out in section "How to modify the composition of the investment: switches" of the SICAV's Prospectus. The Prospectus, the latest annual report and the half-yearly report are drawn up for the SICAV as a whole as indicated in the heading of the present document.